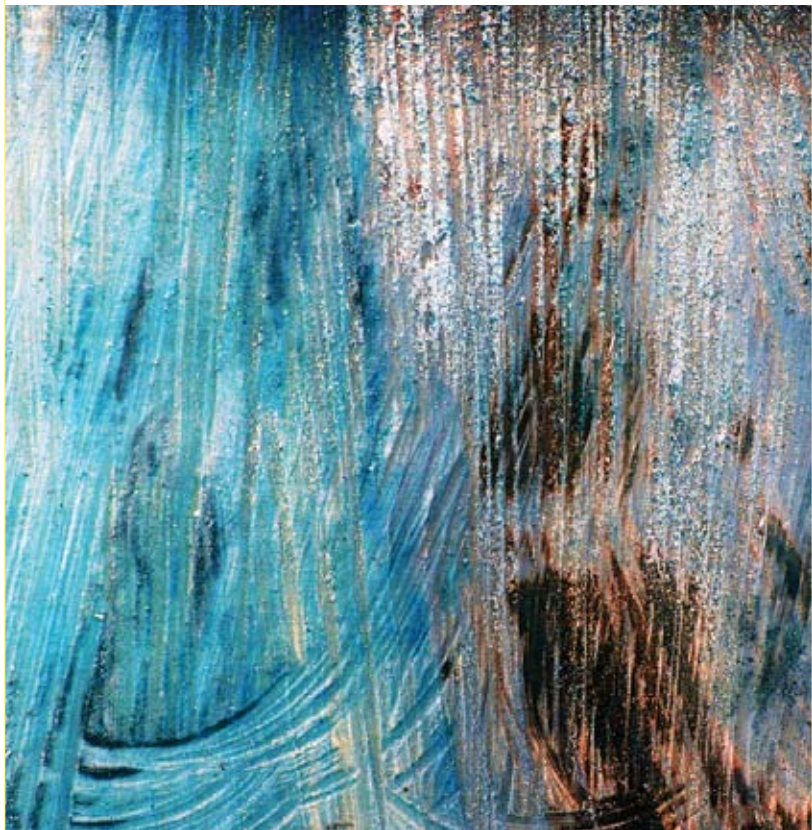


new music network

2009 CONCERT SERIES



Dedicated to the promotion and performance of new music in Australia

www.newmusicnetwork.com.au

PRESIDENT'S MESSAGE



New music is where creative musicians strive to express their ideas and feelings through media that encourage innovation and pose new challenges at every step. The pursuit of an aural ideal, the embrace of new technologies, the thrill of exploring a new combination of sounds or personalities, and the need to express a personal ethos are all motivating factors that encourage the creation of something new in music. This concert series reflects the wealth and diversity of new music, presenting Australia's leading exponents of contemporary art music performance. Dynamic percussion ensembles TaikOz and Karak join Topology, rare appearance by Brisbane's Clocked Out Duo, Robyn Archer presents the 2009 PGH Address, Stockhausen Festival, improvisation in the Manly National Park and five exciting Mini Series concerts are among some of the experiences presented in this years' series. The New Music Network Concert Series gives adventurous and inquisitive audiences the opportunity to connect and engage with the best of new music. We look forward to seeing you there in 2009.

James Nightingale,
President, New Music Network

www.newmusicnetwork.com.au

ABOUT THE NEW MUSIC NETWORK

The New Music Network is dedicated to the promotion and performance of new music in Australia and is a collection of impressive and passionate contemporary music ensembles and organisations.

CURRENT MEMBERS

Aphids (VIC)
Australia Ensemble (NSW)
australYSIS (NSW)
Chronology Arts (NSW)
Clocked Out Duo (QLD)
Continuum Sax (NSW)
David Chesworth Ensemble (VIC)
Ensemble Offspring (NSW)
Greenroom Music (NSW)
Halcyon (NSW)
Jazz Groove (NSW)
Kammer (NSW)
Machine for Making Sense (NSW)
Madeleine Flynn & Tim Humphrey (VIC)
Synergy Percussion & TaikOz (NSW)
SIMA | Sydney Improvised Music Association (NSW)
The Song Company (NSW)
Topology (QLD)
TURA (WA)
What is Music? (VIC)

NEW MUSIC MINI SERIES

The Series offers upcoming groups the opportunity to perform within a network of established ensembles. Submissions for 2010 are open in December 2009. Proposals are welcome from individuals or groups within the contemporary new music practice, electronic, improvisational or composed. Contact NMN for more information
E: nmn@newmusicnetwork.com.au



ENSEMBLE OFFSPRING presents THIRTEEN COLOURS

A delicate immersion of the senses based on light and sound spectra featuring works seldom heard in Australia. Ensemble Offspring perform Bozidar Kos *Fatamorgana* flute, clarinet, violin, cello and percussion, Christopher Tonkin *Widdop*, *Phaetons*, *Relic* percussion, violin and piano, Gerard Grisey *Talea* flute, clarinet, violin, cello and piano, John Luther Adams *Shimmer* triangle and electronics, Yannis Kyriakides *Hyperamplified* alto flute, violin, vibraphone and electronics and Tristan Murail *Treize couleurs du soleil couchant* flute, clarinet, violin, cello, piano and electronics.

Performers: Roland Peelman *conductor*, Lamorna Nightingale *flutes*, Jason Noble *clarinet*, Claire Edwardes *percussion*, Clemens Leske *piano*, James Cuddeford *violin*, Geoffrey Gartner *cello*

Artistic Directors: Damien Ricketson and Claire Edwardes

Date: 8pm Saturday 30 May 2009

Where: MUSIC WORKSHOP, Sydney Conservatorium of Music

Tickets: \$30 Full, \$20 Concession

Bookings: (02) 8256 2222 or tickets available at the door.

Ensemble Offspring is assisted by the NSW Government through Arts NSW and the Australian Government through the Australia Council for the Arts.



arts|nsw





A DAY OF LIGHT AT THE CONSERVATORIUM... KARLHEINZ STOCKHAUSEN (1828-2007)

LICHT LIGHT

A collaboration of Smart Light Sydney with Sydney Conservatorium of Music and supported by the New Music Network, ABC Classic FM, Goethe Institut and Stockhausen Stiftung.

A day-long event around the controversial and recently departed German guru Karlheinz Stockhausen including the long-awaited Australian premiere of extracts from his most ambitious seven day-long music-theatre cycle LICHT. Curated by Roland Peelman with pre-concert talks by Richard Toop, the world's pre-eminent Stockhausen scholar.

Performers: Ensemble Offspring, Kim Walker *bassoon*, Conservatorium New Music Ensemble directed by Daryl Pratt, The Song Company, Tristram Williams *flugelhorn*, Jessica Aszodi *soprano*, Michael Fowler *synthesizer*, Ben Marks *trombone*.

Date: Saturday 6 June 2009

Where: Sydney Conservatorium of Music

Free Event Bookings and Information: (02) 9351 1438 or www.thecon.com.au



CLOCKED OUT DUO presents

FOREIGN OBJECTS

New music with a sense of play and adventure...

Clocked Out Duo use traditional and modified instruments alongside bewildering array of toys, found objects, junk and sound sculptures to create carefully designed sonic and visual experiences. Their unique style embraces a wide variety of influences from experimental, jazz and world music sources. In their playful and adventurous work Clocked Out Duo create links between disparate styles and artistic communities. Equally at home in major concert halls and intimate clubs, the Brisbane-based duo has toured in Australia, New Zealand, Asia, the USA, and Europe.

In a rare Sydney performance, the Duo will perform all new works including *Foreign Objects* – intricate patterns and grooves for prepared piano, bowls, tiles, bottles and recycled materials. *Toy Feldman* – hypnotic and delicate textures emanating from altered and hybridised miniature music boxes. *Lavender Mist* – like a Jackson Pollock painting come to life, Vanessa chaotically whips an array of sounding objects strewn across the floor.

Performers: Erik Griswold *piano*, Vanessa Tomlinson *percussion*

Date: 5pm Sunday 21 June 2009

Where: RECITAL HALL EAST, Sydney Conservatorium of Music

Tickets: \$30 / \$20 Concession and under 30

Bookings: (02) 8256 2222 or tickets available at the door.



KAMMER ENSEMBLE

KAMMER Ensemble begins their 2009 New Music Network concert with a world premiere written by composer, violinist and member of the ensemble, James Cuddeford. This is followed by Wolfgang Rihm's *Fremde Szenen*. A fiercely powerful and expressive work from one of Germany's most important, living composers. His works fully absorb the intensity (and implications) of Schoenberg's expressionistic masterpieces. Composer and conductor Paul Stanhope ends the first half of the program with excerpts for his song cycle *Four Cabaret Songs* from *Love Lines* Using the text from poetry by Michael Leunig.

Renowned cabaret artist Nadia Piave, Paul Stanhope and KAMMER Ensemble perform one of the most influential and important works of the 20th Century, *Pierrot Lunaire* an artist's journey through the inner psyche.

Performers: Nadia Piave *soprano*, Lisa Osmialowski *flute*, John Lewis *clarinet*, Stephanie McCallum *piano*, James Cuddeford *violin/viola*, Daniel Yeadon *cello*, Paul Stanhope *conductor*

Date: 8pm Saturday 25 July 2009

Where: RECITAL HALL EAST, Sydney Conservatorium of Music

Tickets: \$30 / \$20 Concession and under 30

Bookings: (02) 8256 2222 or tickets available at the door.



11th Annual Peggy Glanville-Hicks Address Presented by Robyn Archer

Each year we invite an outstanding advocate of Australian music to deliver an address which, in the spirit of the great Australian composer Peggy Glanville-Hicks, challenges the status quo and raises issues of importance in the world of today's music.

Robyn Archer began singing in public at 4 years old, earning pocket money from it at 12, supporting herself from it at 16, and in all her roles as singer, songwriter, playwright, international festival director and arts advocate, her heart and practice have rarely strayed far from music, especially new music. In her widely acclaimed 2009 Manning Clark Lecture (Canberra, March 13), she lamented the customary overlooking of the role of the composer in the cultural roll call, and in particular the widespread ignorance amongst those who should know better, of the breadth and depth of the Australian musical canon. In the 2009 Peggy Glanville-Hicks Address she will continue these themes: and the audiences for her addresses worldwide now know always to expect something fresh and pertinent each time.

Date: 6pm Tuesday 1 September 2009

Where: THE MINT, 10 Macquarie St, Sydney

Free event bookings essential (02) 8239 2211

Enquiries: nmn@newmusicnetwork.com.au

HISTORIC HOUSES TRUST



The Network is grateful for the support of the Historic Houses Trust



HALCYON presents WILLOW SONGS

Intrigued by its concise form and depth of meaning, Western composers have been inspired by Japanese Haiku since the turn of the twentieth century. Halcyon presents a selection of evocative contemporary Haiku settings for voice and ensemble by Ton de Leeuw, Julian Yu, John Cage, David Lesser and Colin Matthews. The performance culminates in the world premiere of a new song cycle by Andrew Ford on poems by Anglo-American poet Anne Stevenson. Willow Songs is a picture of a woman's life in reverse, from defiant, outrageous maturity to vulnerable girlhood.

Date: 7.30pm Saturday 26 September 2009

Where: TRACKDOWN SCORING STAGE, Building #125, The Entertainment Quarter, Lang Road, Moore Park

Price: \$30 Full / \$20 Concession & Under 30

Bookings: (02) 8256 2222 or tickets available at the door



MACHINE FOR MAKING SENSE presents WEST HEAD PROJECT IV at Middle Head, Manly

We hear the alien quality of the non-human in our music and the humanity of music in nature. David Dunn

Over the past three years the West Head Project has been presented at Ku-ring-gai National Park. In 2009 the project will continue the tradition although at a different location, Middle Head, the Southern Head of the inner Heads close to Manly and Balmoral. With the beautiful natural setting, the point also offers an amazing group of abandoned military bunkers and gun positions that function as amphitheatres. This is ideal for a performance where 3 or 4 spaces can be used at once and have musicians and audiences travelling between the spaces.

By sitting down, listening to, and sounding out into this land we simply aim to add sounds that don't feel out of place. Because these are unique and often wonderful acoustics our solutions are potentially unique. In these places the music can intertwine with all the other elements present. This feeling of being woven into the world, is what I live for. And making stuff that isn't out of place, at this point in time, is surely what we all have to aim for. Jim Denley

Performers: Jim Denley *wind instruments*, Kraig Grady *percussion*, Peter Farrar *alto saxophone*, Adam Sussman *guitar*, Jo Derrick *trumpet*, Monika Brooks *accordion*, Kim Myhr *guitar*.

Date: 4pm Sunday 25 October 2009

Where: MIDDLE HEAD, Manly National Park

Suggested donation: \$30 Full / \$20 Concession

Bookings Essential: Places are limited! Phone Philippa @ NMN on 0411 606 077

CONTINUUM SAX presents

WINTERSCENARIO

The live audio-visual collaboration between VJ and filmmaker Rachel Brown and Continuum saxophone quartet is inspired by Jacob TV's *Postnuclear Winterscenario No.10* – a bleakly beautiful sonic portrait of a hypothetical reality. Continuum plays the atmosphere with chords while Brown uses Ms Pinky software to create a parallel universe of images reflecting suspended life and the cold beauty that winter delivers: seasonal or not. Music by Mark Anthony Turnage, Christian Lauba, Elena Firsova and Tony Gorman continue the theme of Winterscenario, reflecting landscape, memory, distance and light.

For the balance of the concert Continuum presents the world premiere of Damien Ricketson's first saxophone quartet; and the Australian premiere of the spectralist composer Hugues Dufourt's *Quatuor pour saxophones*.

Performers: Margery Smith, James Nightingale, Martin Kay, Jarrod Whitbourn *saxophones* and *video jockey* Rachael Brown

Date: 7pm Saturday 31 October 2009

Where: RECITAL HALL EAST, Sydney Conservatorium of Music

Price: \$30 Full / \$20 Concession & Under 30

Bookings: (02) 8256 2222 or tickets available at the door

APHIDS SYSTEM BUILDING

Co-commission by Carriageworks (Sydney), RadialSystem V (Berlin), Singapore Museum of Art and Noorderzon Festival (the Netherlands) presented in Australia and internationally August- October 2009. A new work for percussion created by Rosemary Joy. She will create a series of miniature percussion instruments inspired by each of the venues and will be performed by two percussionists. Following a spotlight presentation at APAM in 2008 international demand for this production has been overwhelming with each presenter in this tour entering into a dialogue with Aphids to create a unique version of the performance adapted to their venue.

Date: 23 November 2009

Where: Carriageworks, Wilson St, Eveleigh

Price: \$20 Full / \$15 Concession & Under 30

Bookings: (02) 8256 2222 or 0411 606 077 bookings essential places are limited



TAIKOZ, TOPOLOGY & KARAK PERCUSSION

Presented by TaikOz, Places & Spaces and the New Music Network



TaikOz, Australia's premiere taiko drumming group will join forces with Brisbane's eclectic new music ensemble Topology, and the virtuosic percussion duo Karak. The program includes new works by David Pye, Robert Davidson and John Babbage and Ian Cleworth.

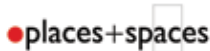
Despite their surface differences, the groups share a common desire to push boundaries within their chosen art forms: they write and perform their own music as well as that of other composers, and are adept at improvisation and working in a variety of locations and mixed media. TaikOz and Topology are keen to experience and feed off each other's energy and to this end new works will be composed by members of each ensemble. In addition, a new piece by renowned West Australian composer David Pye will be a much anticipated premiere. TaikOz featuring Riley Lee and Topology, lead by composer and performer Robert Davidson, comprises piano, bass, saxophones, violin and viola - all amplified.

Date: 8pm Friday 27 November 2009

Where: ENMORE THEATRE, Enmore Road, Enmore

Price: \$55 Full / \$30 Concession

Bookings: Enmore Theatre Box Office (02) 9550 3666, enmoretheatre.com.au



TAIKOZ

topology

karak percussion



australYSIS presents

Logic <—> Event <—> Chance and Structure

australYSIS will present new real-time and out-of-time work which uses recent computational developments in object-spotting (identifying incoming sound or visual objects in a stream and their counterparts in a previous stream so as to forge new relationships), and live-coding (creating structure at any level from micro- to macro- while performing). These opportunities permit novel approaches to the generation of musical expression in composition and improvisation. New works by members of australYSIS.

Performers/Creators: Roger Dean *piano keyboards, computers*, Sandy Evans *saxophones*, Phil Slater *trumpets*, Hazel Smith *speaker*, Greg White *computers*, and others.

Date: 8pm Saturday 5 December 2009

Where: RECITAL HALL EAST, Sydney Conservatorium of Music

Price: \$30 Full / \$20 Concession & Under 30

Bookings: (02) 8256 2222 or tickets available at the door

NEW MUSIC MINI SERIES

The 2009 Mini Series features five exciting concerts showcasing the rich diversity of the new music scene.



1. THE THREE OMEGAS

Formed in 2007, The Three Omegas brings together David de Vries (guitar), Mike Majkowski (double bass) and James 'Pug' Waples (drums) as improvisers, peers, composers and friends. The group strives to present a unique approach to the guitar trio format through exploring music with an uninhibited openness that embraces uneasiness with a shared intuitive trust. The Three Omegas's will be presenting a one off performance with two of Sydney most respected improvisers, Carl Dewhurst (guitar) and Peter Farrar (alto saxophone).

Date: 6.30pm Wednesday 1 July 2009

Where: CONSERVATORIUM MUSIC CAFE, Sydney Conservatorium of Music

Price: \$20 Full / \$12 Concession & Under 30

Bookings: (02) 8256 2222 or tickets available at the door



2. SOLO PERSPECTIVE 1

WILLAM LANE, JANET MCKAY, ADAM SIMMONS

Based in Hong Kong **WILLIAM LANE** is currently violist with the Hong Kong Philharmonic Orchestra and Artistic Director of the Hong Kong New Music Ensemble. William has been Principal Viola of the string orchestra Resonanz Chamber Orchestra (Hamburg, Germany), freelance basis Ensemble Modern (Frankfurt), and as a permanent member of the SMASH Ensemble (Salamanca, Spain). As an orchestral musician he has worked as Principal Viola with the Australian Youth Orchestra and casual player with the Tasmanian Symphony Orchestra.

JANET MCKAY is a prize-winning flautist committed to the performance and development of new music. In addition to her M.Mus (Performance) and B.Mus (Hons) she has studied at the Guildhall School of Music (UK) and the Bang on a Can Institute (USA). In addition to her solo work, Janet performs with new music ensembles Chronology Arts and Clocked Out. She has recently established her own performance presentation organisation, Random Overtones, to serve as an umbrella for the various aspects of her musical life.

Melbourne based artist, **ADAM SIMMONS** will present a solo performance of new and original compositions and improvisations, performing across a range of woodwinds, both familiar and unusual, such as sopranino saxophone, contrabass clarinet, piccolo, shakuhachi (Japanese bamboo flute) and fujara (Slovakian bass flute). Adam's control over extended techniques on his instruments, as well as his use of toys as unusual sound sources, seeks to engage the listener into the sound-making process - not just the music resulting from the combination or sequence of sounds but the actual production of the sound itself.

Date: 5pm Sunday 9 August 2009

Where: RECITAL HALL EAST, Sydney Conservatorium of Music

Price: \$20 Full / \$12 Concession & Under 30

Bookings: (02) 8256 2222 or tickets available at the door



3. SOLO PERSPECTIVE 2

BRIGID BURKE, MARK CAURVIN, MICHAEL FOWLER

BRIGID BURKE is a clarinetist, composer, visual artist and video-maker. Acoustic extended clarinet sounds excite her with their extraordinarily rich possibilities. She is particularly interested in integrating her musical ideas with a combination of different visual media. The series of works presented are inspired by natural elements such as architecture, natural environments, water, glass, paper, organic textures, visual art works, movement (dance), air, improvisation, notation and text.

Solo double bass player **MARK CAUVIN** is a performer with a penchant for the avant-garde. In this concert Mark will present two contrasting works beginning with WKP 258 for double bass and prepared microphone. This piece is a form of improvisation/meditation with no formal structure because the principal sound is the sharp jangling sound of the microphone reacting to the oscillating string. The nature of this sound determines the direction. The second work is Mark's version of Karlheinz Stockhausen's graphic score *Plus Minus* for solo double bass. It is made up of 53 distinct events played consecutively. The technical demands of *Plus Minus* require extreme sensitivity of touch and virtuoso skill.

MICHAEL FOWLER is an exponent of electro-acoustic music, and performs on a variety of keyboard instruments including, synthesizers, the toy piano, live electronics, circuit-bending devices and the prepared piano. He has always been attracted to the percussive qualities of the piano, and, at the same time conscious of how as pianists, we tend to be extremely liberal in the interpretation of rhythm. The combination of piano and tape music brings a new dimension to how one plays and interprets a musical score. In his performance of Milton Babbitt's *Reflections* and Ben Boretz's *Downtime*, the preciseness becomes a term that sits outside of traditional approaches to interpretation.

Date: 5pm Sunday 16 August 2009

Where: RECITAL HALL EAST, Sydney Conservatorium of Music

Price: \$20 Full / \$12 Concession & Under 30

Bookings: (02) 8256 2222 or tickets available at the door



3. GOLDEN FUR

Golden Fur is a new Melbourne-based music project comprising James Rushford (piano, viola), Judith Hamann (cello, prepared cello), and Sam Dunscombe (clarinets, laptop), who are re-imagining chamber music in the realms of experimental music and the avant-garde. Seeking to create a further dialogue with the language of exploratory music as well as that of improvisation, theatre and visual art, Golden Fur will be presenting challenging new works written specifically for the ensemble by Australian composer Kate Neal and visual artist, composer Marco Fusinato, alongside works by Australians Liza Lim and Robert Rooney. The concert will also feature a world premiere by Dutch experimental icon Jaap Blonk. Golden Fur engages with contemporary classical music in youthfully iconoclastic style, adding volume, volatility and theatricality by means of built instruments, electronics, amplification and computers. Thanks to Golden Fur, the seemingly discrete worlds of classical, experimental, improvisation and indie/DIY music are about to collide.

Date: 5pm Sunday 6 September 2009

Where: RECITAL HALL EAST, Sydney Conservatorium of Music

Price: \$20 Full / \$12 Concession & Under 30

Bookings: (02) 8256 2222 or tickets available at the door



5. THE ORIGIN CYCLE

Charles Darwin's *Origin of Species* is not only one of the most important scientific works of all time, but one of the most beautifully written. In *The Origin Cycle*, for soprano and chamber ensemble, fragments of Darwin's great book are set to music by Australian composers Elliott Gyger, Elena Kats-Chernin, Kate Neal, Rosalind Page, Paul Stanhope, Nicholas Vines, and Dan Walker. In celebration of the 2009 bicentennial of Darwin's birth and 150 years since the first publication of the Origin, this performance by Ensemble Offspring and soprano Jane Sheldon will take place among the exhibits of the Australian Museum.

The passages chosen encompass the entire work, capturing the many facets of a Darwinian view of nature and summarising what Darwin called the 'one long argument' contained in the Origin. They include the passages introducing his most famous and enduring images – the 'tree of life' connecting all species, the vision of nature as a surface into which wedges are unceasingly struck, and the book's final invocation of 'grandeur in this view of life'.

Performers: Jane Sheldon *soprano* and Ensemble Offspring

Date: 7:30pm Thursday 19 November 2009

Where: AUSTRALIAN MUSEUM FOYER, College St entrance, Cnr William & College St, Sydney

Price: \$20 Full / \$12 Concession & Under 30

Bookings: 0411 606 077 or tickets available at the door



2009 SUBSCRIPTIONS

DATE	CONCERT	FULL PRICE	CONC/UNDER 30	TOTAL
30 MAY	ENSEMBLE OFFSPRING	[] X \$30	[] X \$20	= \$
6 JUNE	STOCKHAUSEN FESTIVAL	FREE EVENT		
21 JUNE	CLOCKED OUT DUO	[] X \$30	[] X \$20	= \$
25 JULY	KAMMER	[] X \$30	[] X \$20	= \$
20/8, 1/9	PGH ADDRESS	FREE EVENTS BOOKINGS ESSENTIAL		
26 SEPT	HALCYON	[] X \$30	[] X \$20	= \$
NOV	APHIDS	BOOK THROUGH CARRIAGEWORKS		
25 OCT	MACHINE FOR MAKING SENSE	[] X \$30	[] X \$20	= \$
31 OCT	CONTINUUM SAX	[] X \$30	[] X \$20	= \$
27 NOV	TAIKOZ, TOPOLOGY, KARAK	BOOK THROUGH ENMORE THEATRE		
5 DEC	austrALYSIS	[] X \$30	[] X \$20	= \$
NEW MUSIC MINI SERIES				
1 JUL	THE THREE OMEGAS	[] X \$20	[] X \$12	= \$
9 AUG	WILLIAM LANE, JANET MCKAY, ADAM SIMMONS	[] X \$20	[] X \$12	= \$
16 AUG	BRIGID BURKE, MARK CAURVIN, MICHAEL FOWLER	[] X \$20	[] X \$12	= \$
6 SEPT	GOLDEN FUR	[] X \$20	[] X \$12	= \$
19 NOV	THE DARWIN PROJECT	[] X \$20	[] X \$12	= \$

Prices include GST, booking fees may apply.

TOTAL=\$

BOOKING FORM

PLEASE MAKE CHEQUES OR MONEY ORDERS PAYABLE TO THE NEW MUSIC NETWORK.

NAME _____

ADDRESS _____

POSTCODE _____

TEL-DAY _____

TEL-EVE _____

EMAIL _____

WHERE DID YOU PICK UP THE BROCHURE?

AGE GROUP: UNDER 30 31 - 40 41 - 50 51 - 60 OVER 60

SPECIAL FREE TICKET OFFER

Receive a free ticket to a Network concert when you subscribe to three or more concerts.

HOW TO GET YOUR FREE TICKET

1. Complete the form above.
2. Return with payment to the New Music Network, PO Box A661, SYDNEY SOUTH NSW 1235

When your bookings are received we will contact you with the concert details. Only one ticket per household. Your information is confidential and will only be used for our records in order to provide a better service.

CONCERT VENUES

AUSTRALIAN MUSEUM
Cnr William & College St, Sydney
Bookings: 0411 606 077
Email: nmn@newmusicnetwork.com.au

CARRIAGEWORKS
Wilson St, Eveleigh
Bookings: 1300 723 038
Internet: www.carriageworks.com.au

ENMORE THEATRE
Enmore Road, Enmore
Bookings: (02) 9550 3666
Internet: www.enmoretheatre.com.au

MIDDLE HEAD, Manly National Park
Bookings: 0411 606 077
Email: nmn@newmusicnetwork.com.au

SYDNEY CONSERVATORIUM OF MUSIC
Macquarie St, Sydney
Bookings: (02) 8256 2222
Email: tickets@cityrecitalhall.com
Internet: www.music.usyd.edu.au

TRACKDOWN SCORING STAGE
Building #125, The Entertainment Quarter,
Lang Road, Moore Park

new music network

President: James Nightingale

Vice President: David Young

Secretary: Jenny Duck-Chong

Treasurer: Amanda Stewart

Manager: Philippa Horn

Phone: 0411 606 077

Email: nmn@newmusicnetwork.com.au

Internet: www.newmusicnetwork.com.au

ABN: 69 568 255 635

For information about the New Music Network, membership or to join the free eNews please contact Philippa Horn or join online.

The New Music Network is assisted by Arts NSW and the Australia Council for the Arts.

arts|nsw 



Australian Government



Program subject to change.

DESIGN: philippahorn@optusnet.com.au